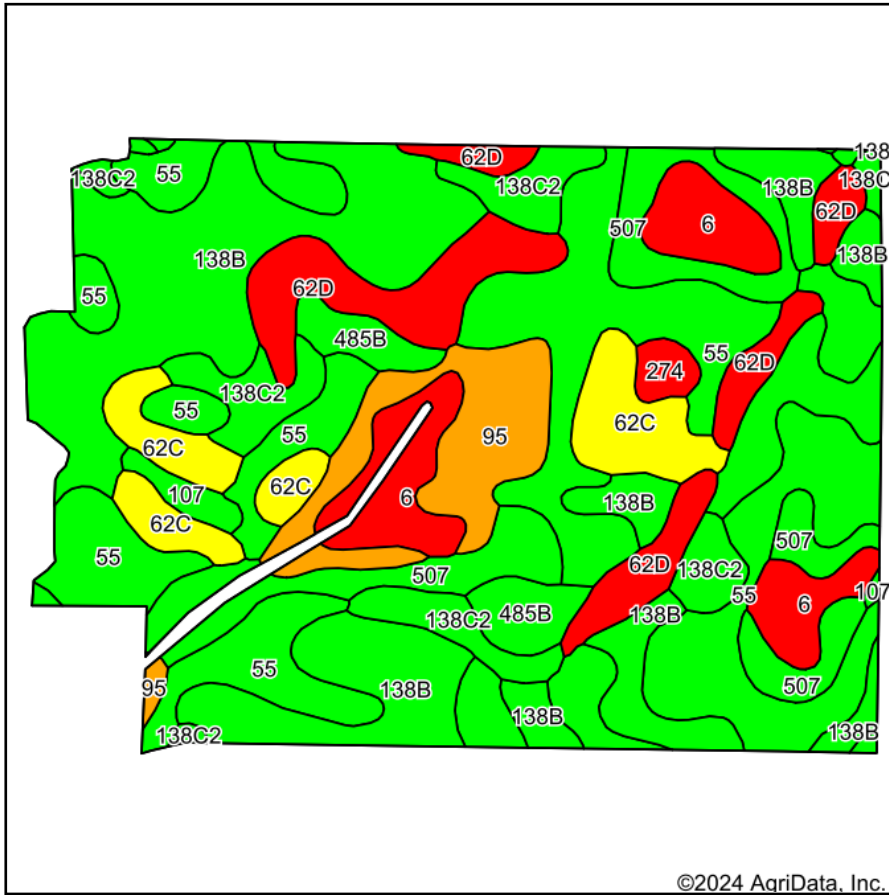
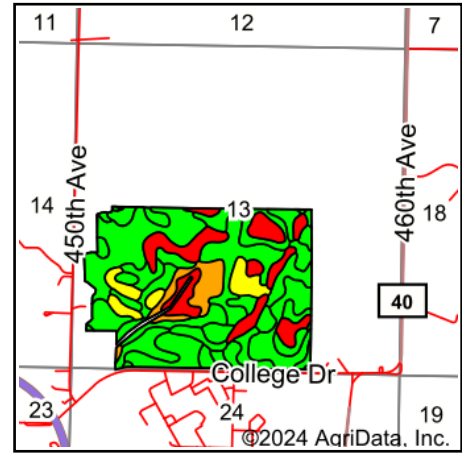


Soils Map



©2024 AgriData, Inc.



State: **Iowa**
 County: **Palo Alto**
 Location: **13-96N-33W**
 Township: **Emmetsburg**
 Acres: **201.03**
 Date: **8/29/2024**



Maps Provided By:

 CUSTOMIZED ONLINE MAPPING
 © AgriData, Inc. 2023 www.AgriDataInc.com



Soils data provided by USDA and NRCS.

Area Symbol: IA147, Soil Area Version: 30												
Code	Soil Description	Acres	Percent of field	CSR2 Legend	Non-Irr Class *c	CSR2**	CSR	*n NCCPI Overall	*n NCCPI Corn	*n NCCPI Small Grains	*n NCCPI Soybeans	
55	Nicollet clay loam, 1 to 3 percent slopes	57.99	28.8%		lw	89	84	81	81	74	81	
138B	Clarion loam, 2 to 6 percent slopes	52.10	25.9%		lle	89	76	83	78	72	83	
62D	Storden loam, 10 to 16 percent slopes, moderately eroded	16.67	8.3%		lVe	41	39	65	62	55	65	
507	Canisteo clay loam, 0 to 2 percent slopes	16.51	8.2%		llw	84	74	81	71	65	81	
6	Okoboji silty clay loam, 0 to 1 percent slopes	13.02	6.5%		lllw	59	54	77	74	74	74	
138C2	Clarion loam, 6 to 10 percent slopes, moderately eroded	12.82	6.4%		llle	83	58	70	68	61	70	
62C	Storden loam, 6 to 10 percent slopes, moderately eroded	12.24	6.1%		llle	64	48	68	64	57	68	
95	Harps clay loam, 0 to 2 percent slopes	11.38	5.7%		llw	72	59	82	70	63	82	
485B	Spillville loam, 2 to 5 percent slopes	5.27	2.6%		lle	88	76	89	87	74	87	
107	Webster clay loam, 0 to 2 percent slopes	1.63	0.8%		llw	86	79	83	78	70	82	
274	Rolfe silt loam, 0 to 1 percent slopes	1.40	0.7%		lllw	57	49	83	82	69	68	
Weighted Average						2.07	79.5	69.7	*n 78.7	*n 75	*n 68.6	*n 78.4

Soils data provided by USDA and NRCS.

Maps Provided By:



© AgriData, Inc. 2023

www.AgriDataInc.com

**IA has updated the CSR values for each county to CSR2.

*n: The aggregation method is "Weighted Average using all components"

*c: Using Capabilities Class Dominant Condition Aggregation Method