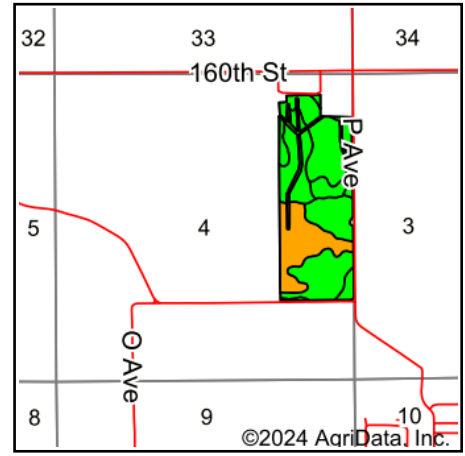
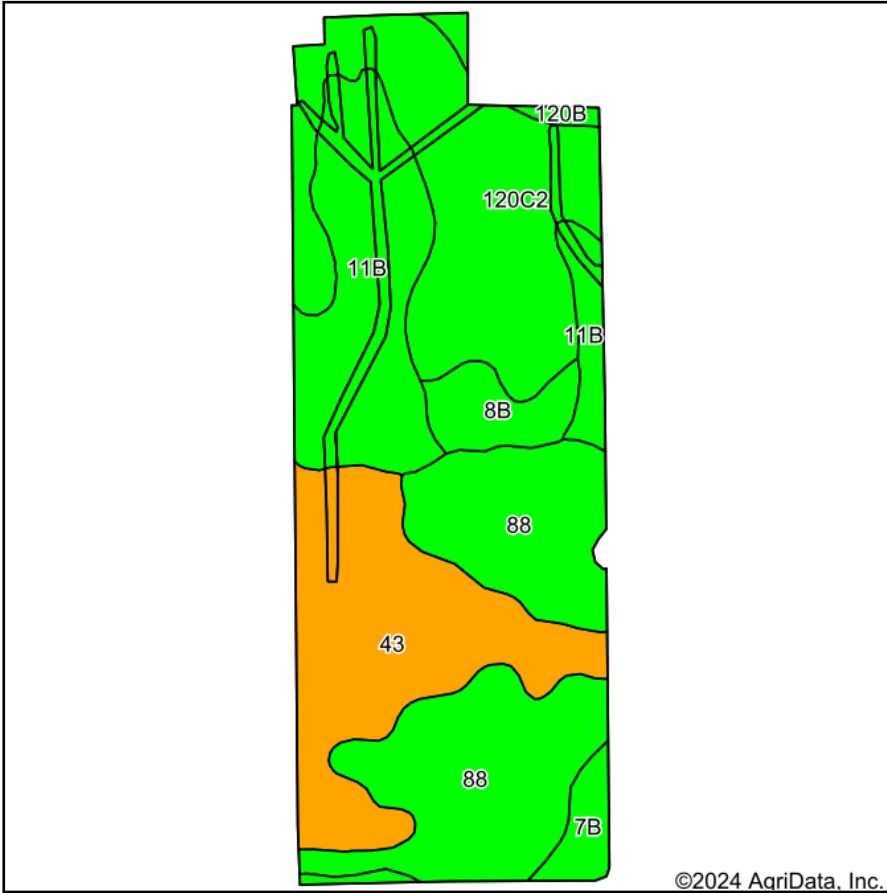


Soils Map



State: **Iowa**
 County: **Tama**
 Location: **4-85N-14W**
 Township: **Perry**
 Acres: **101.48**
 Date: **4/26/2024**



Maps Provided By:



© AgriData, Inc. 2023

www.AgriDataInc.com



Soils data provided by USDA and NRCS.

Area Symbol: IA171, Soil Area Version: 28													
Code	Soil Description	Acres	Percent of field	CSR2 Legend	Non-Irr Class *c	CSR2**	CSR	*n NCCPI Overall	*n NCCPI Corn	*n NCCPI Small Grains	*n NCCPI Soybeans	*n NCCPI Cotton	
88	Nevin silty clay loam, 0 to 2 percent slopes	27.63	27.2%		lw	95	90	97	97	77	87	1	
120C2	Tama silty clay loam, 5 to 9 percent slopes, eroded	24.89	24.5%		llle	87	78	88	88	70	69		
43	Bremer silty clay loam, 0 to 2 percent slopes, occasionally flooded	22.12	21.8%		llw	74	82	77	77	69	65		
11B	Colo-Ely complex, 0 to 5 percent slopes	19.14	18.9%		llw	86	68	92	92	64	76		
8B	Judson silty clay loam, 2 to 5 percent slopes	4.03	4.0%		lle	84	90	77	77	57	58		
7B	Wiota silt loam, 2 to 5 percent slopes, rarely flooded	2.70	2.7%		l	95	90	92	92	75	80		
120B	Tama silty clay loam, 2 to 5 percent slopes	0.97	1.0%		lle	95	95	96	96	78	79		
Weighted Average						1.95	86.3	81.2	*n 88.6	*n 88.6	*n 70.2	*n 74.3	*n 0.3

**IA has updated the CSR values for each county to CSR2.

*n: The aggregation method is "Weighted Average using all components"

*c: Using Capabilities Class Dominant Condition Aggregation Method

Soils data provided by USDA and NRCS.