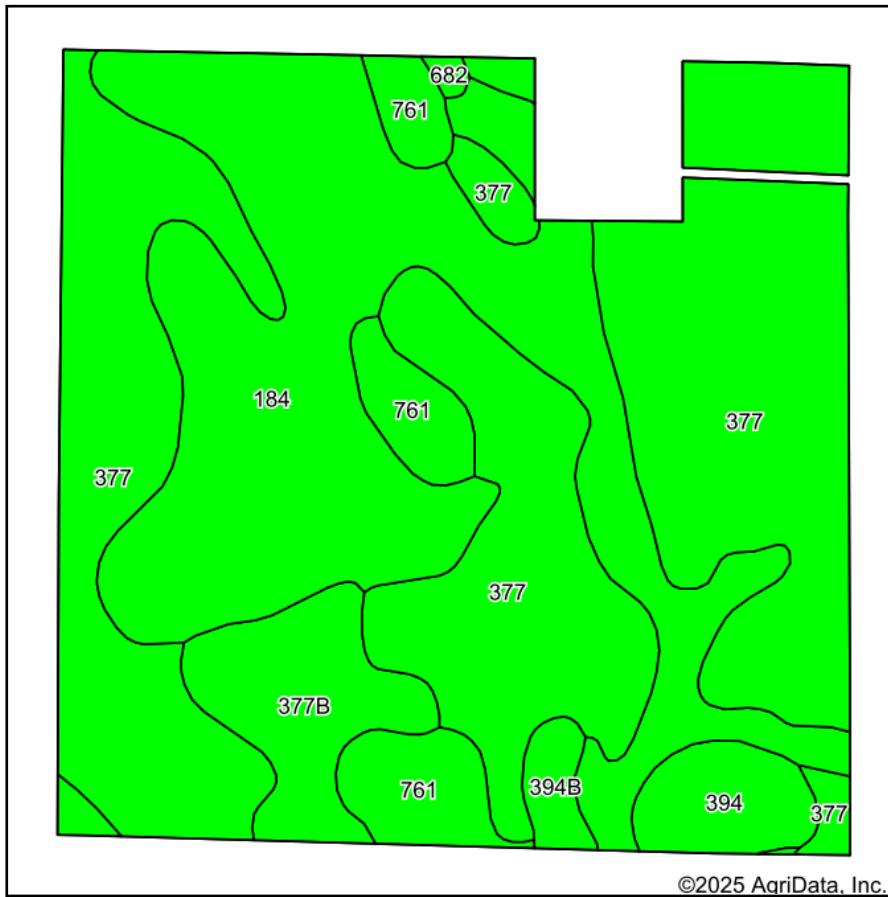
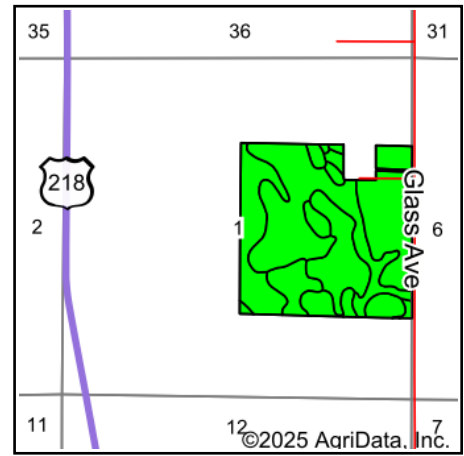


# Soils Map



Soils data provided by USDA and NRCS.



State: **Iowa**  
 County: **Mitchell**  
 Location: **1-99N-18W**  
 Township: **St. Ansgar**  
 Acres: **151.61**  
 Date: **12/18/2025**



Maps Provided By:



Area Symbol: IA131, Soil Area Version: 31										
Code	Soil Description	Acres	Percent of field	CSR2 Legend	Non-Irr Class *c	CSR2**	*n NCCPI Overall	*n NCCPI Corn	*n NCCPI Small Grains	*n NCCPI Soybeans
377	Dinsdale silty clay loam, 0 to 2 percent slopes	76.20	50.3%		le	99	86	86	71	74
184	Klinger silty clay loam, 1 to 4 percent slopes	51.26	33.8%		lw	95	89	89	79	83
377B	Dinsdale silty clay loam, 2 to 5 percent slopes	8.86	5.8%		lle	94	88	88	68	75
761	Franklin silt loam, 1 to 3 percent slopes	8.79	5.8%		lw	85	88	88	73	76
394	Ostrander loam, 0 to 2 percent slopes	4.39	2.9%		ls	94	78	78	71	70
394B	Ostrander loam, 2 to 5 percent slopes	1.77	1.2%		lle	88	77	76	70	68
682	Maxfield silt loam, 0 to 2 percent slopes	0.34	0.2%		llw	83	79	79	61	67
Weighted Average					1.07	96.2	*n 86.9	*n 86.9	*n 73.6	*n 77

\*\*IA has updated the CSR values for each county to CSR2.

\*n: The aggregation method is "Weighted Average using all components"

\*c: Using Capabilities Class Dominant Condition Aggregation Method

Soils data provided by USDA and NRCS.